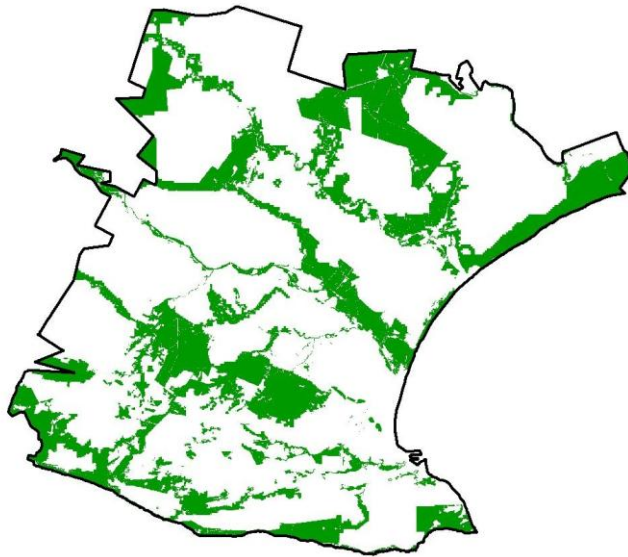


Securing the MOSS in the NMBM



*Lukhanyo Makaka
Environmental Management
Public Health Directorate*

What is a MOSS

- It is a system or network of natural and developed open spaces.
- Previous renditions of the MOSS in NMBM- 1990's, 2003 & 2007.
- NMB MOSS CAP 2007:
 - ✓ A systematic Conservation Assessment
 - ✓ Spatial Biodiversity Plan

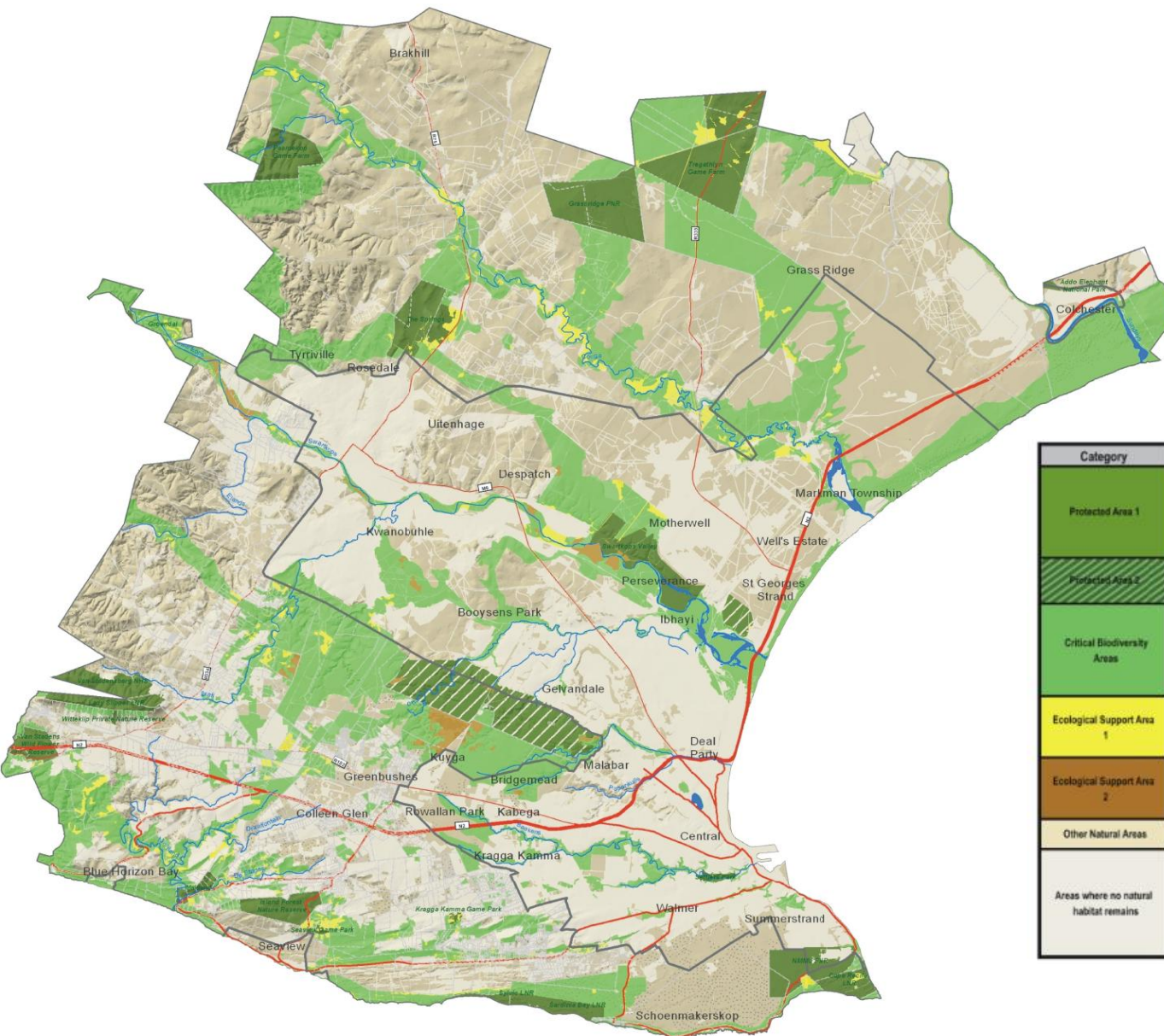


NMB MOSS Legal tool

- **Bioregional plan**= map of critical biodiversity areas and land use planning guidelines
- Purpose : guide land use planning and decision making through **improving the legal standing of CBAs**
- The bioregional plan allows for the NMB MOSS to be considered by all organs of state in all land use planning and decision making process
 - Legally obliges this consideration
 - Municipal sector plans and to lobby against mining within conservation areas

NELSON MANDELA BAY MUNICIPALITY

MAP OF CRITICAL BIODIVERSITY AREAS



Category	Code	Description	Land Management Objective
Protected Area 1	PA 1	Protected areas managed by SAN Parks, provincial or local authorities, parastatals (e.g. NMMU), or the private sector. Includes National Parks, Provincial, Local and Private Nature Reserves.	To be maintained as Protected Areas.
Protected Area 2	PA 2	National Parks, Provincial, Local, Private Nature Reserves pending declaration.	To be declared and maintained as Protected Areas.
Critical Biodiversity Areas	CBA's	All Critically Endangered habitats, ecological process areas, ecological corridors, habitats for Species of Special Concern, and some Endangered, Vulnerable or Least Threatened habitats.	Such areas must be managed for biodiversity conservation purposes and incorporated into the protected area system.
Ecological Support Area 1	ESA 1	Agricultural land that plays an important role in ecosystem functioning and / or provides connectivity between natural areas.	Such areas must be maintained for extensive agricultural purposes and managed to promote ecological connectivity.
Ecological Support Area 2	ESA 2	Areas severely disturbed or transformed by human activities (e.g. mining), requiring restoration or rehabilitation.	Such areas must be restored or rehabilitated to support ecological connectivity. Such areas must not be developed.
Other Natural Areas	ONA	Natural areas that are not required to meet biodiversity targets.	As per the Municipal SDF or local SDF's.
Areas where no natural habitat remains	DEV	Areas severely disturbed or transformed by human activities with no natural habitat remaining, including airfields, cultivated lands, forestry plantations, industry, mines and quarries, severe overgrazing, and urban and rural development.	As per the Municipal SDF or local SDF's.

NMB MOSS: Land use planning & management

- Strategic level –
 - Ensuring that the biodiversity priorities are mainstreamed into the IDP and SDF as well as the various sector plans of the municipality
- At more operational level:-
 - **Corporate EIA Task Team (CETT)**
 - **Subdivision and Land Transaction Committee (SALT)**
 - **NMBM-DEDEA Bilateral**



NMB MOSS Land use planning & management Cont...

- EMF

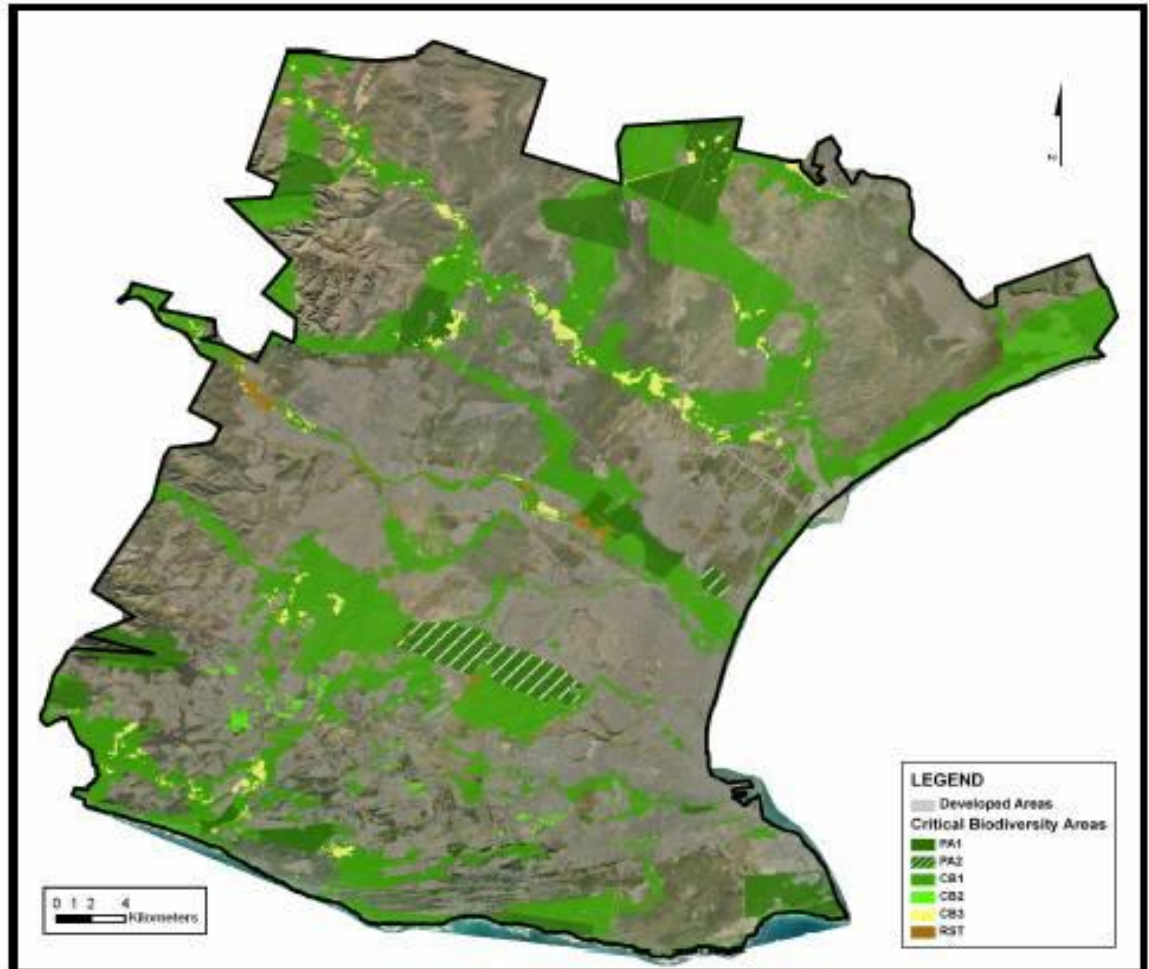
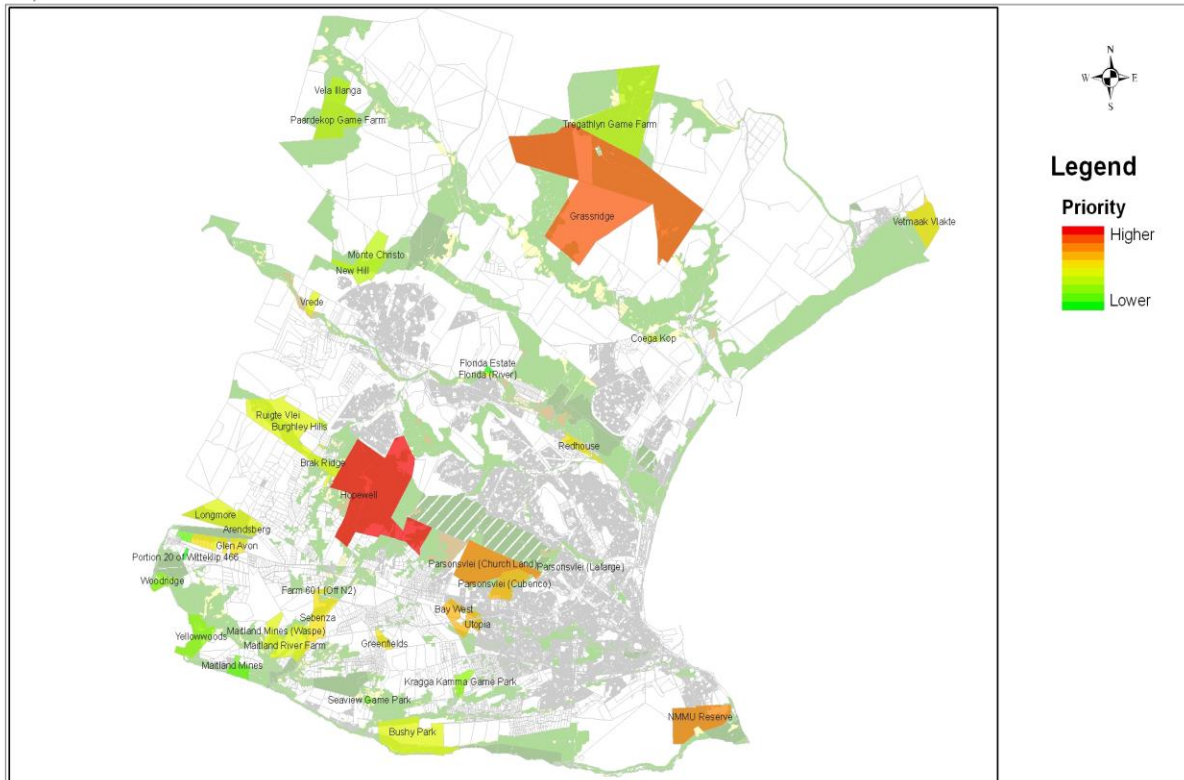


Figure 11-1: The Critical Biodiversity Areas (CBAs) in Nelson Mandela Bay

NMB MOSS Biodiversity Stewardship



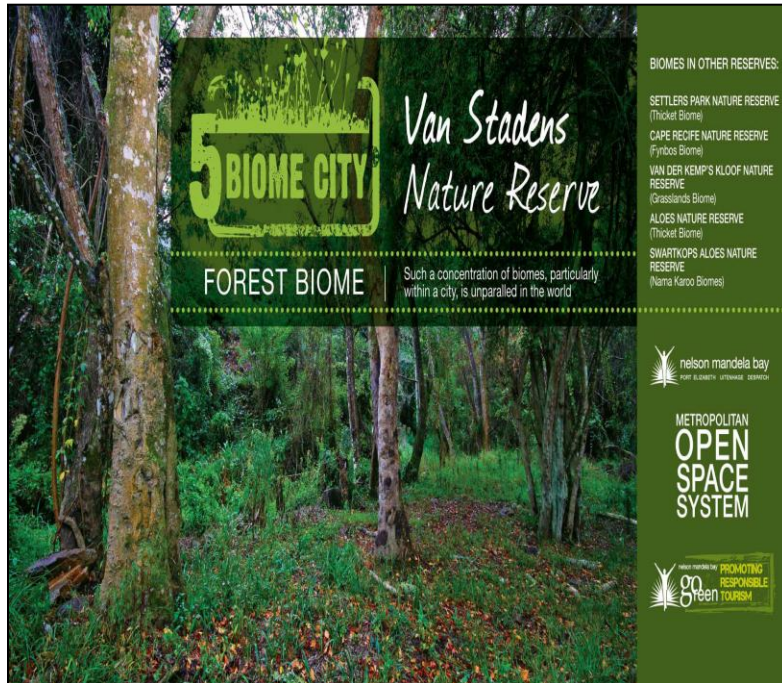
Project No.	Datum:
416663	HH 1994
	Projection:
	TM
	Central Meridian:
	25

NMBM BIODIVERSITY STEWARDSHIP SHORT-LISTED POTENTIAL PILOT SITES

Date:	Scale
10/02/2011	1:340,000
Compiled by:	Fig No.
B. Reeves	001

Awareness Campaigns

- Five Biome City Campaign



5 BIOME CITY Van Stadens Nature Reserve

FOREST BIOME Such a concentration of biomes, particularly within a city, is unparalleled in the world

BIOMES IN OTHER RESERVES:

- SETTLERS PARK NATURE RESERVE (Thicket Biome)
- CAPE RECIFE NATURE RESERVE (Fynbos Biome)
- VAN DER KEMP'S KLOOF NATURE RESERVE (Grasslands Biome)
- ALOES NATURE RESERVE (Thicket Biome)
- SWARTKOPS ALOES NATURE RESERVE (Nama Karoo Biomes)

nelson mandela bay
PORT ELIZABETH | UITENHAGE | DESPATCH

METROPOLITAN OPEN SPACE SYSTEM

nelson mandela bay
PROMOTING RESPONSIBLE TOURISM
goGreen



5 BIOME CITY Swartkops Nature Reserve

NAMA KAROO BIOME Such a concentration of biomes, particularly within a city, is unparalleled in the world

BIOMES IN OTHER RESERVES:

- VAN STADENS NATURE RESERVE (Forest Biome)
- SETTLERS PARK NATURE RESERVE (Thicket Biome)
- CAPE RECIFE NATURE RESERVE (Fynbos Biome)
- VAN DER KEMP'S KLOOF NATURE RESERVE (Grasslands Biome)
- ALOES NATURE RESERVE (Thicket Biome)

nelson mandela bay
PORT ELIZABETH | UITENHAGE | DESPATCH

METROPOLITAN OPEN SPACE SYSTEM

nelson mandela bay
PROMOTING RESPONSIBLE TOURISM
goGreen

