

# **CREW with a Cause**

Nelson Mandela Bay: A hotspot of  
unprotected threatened plant species

Clayton Weatherall-Thomas



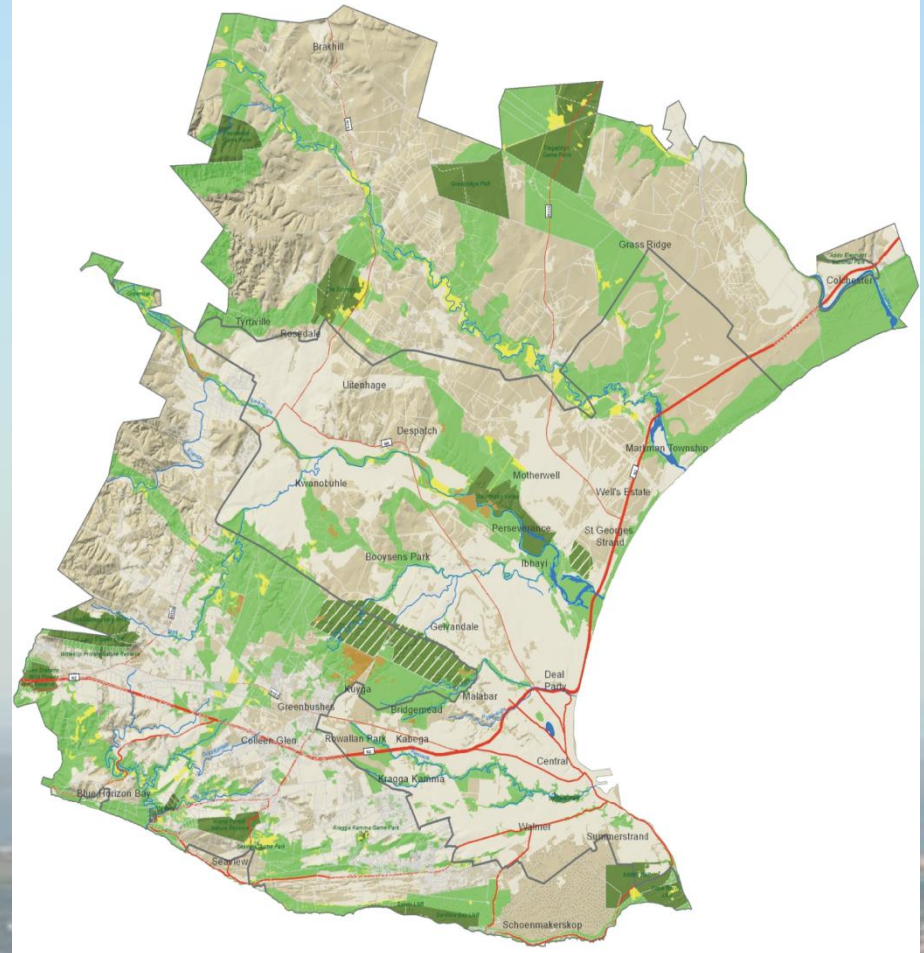
# Nelson Mandela Bay: A biodiversity hotspot

Meeting place of two Biodiversity  
Hotspots

- Cape Floristic Region
- Maputaland-Pondoland-Albany Hotspot



## NELSON MANDELA BAY MUNICIPALITY MAP OF CRITICAL BIODIVERSITY AREAS



# The Five Biome City

**Legend**

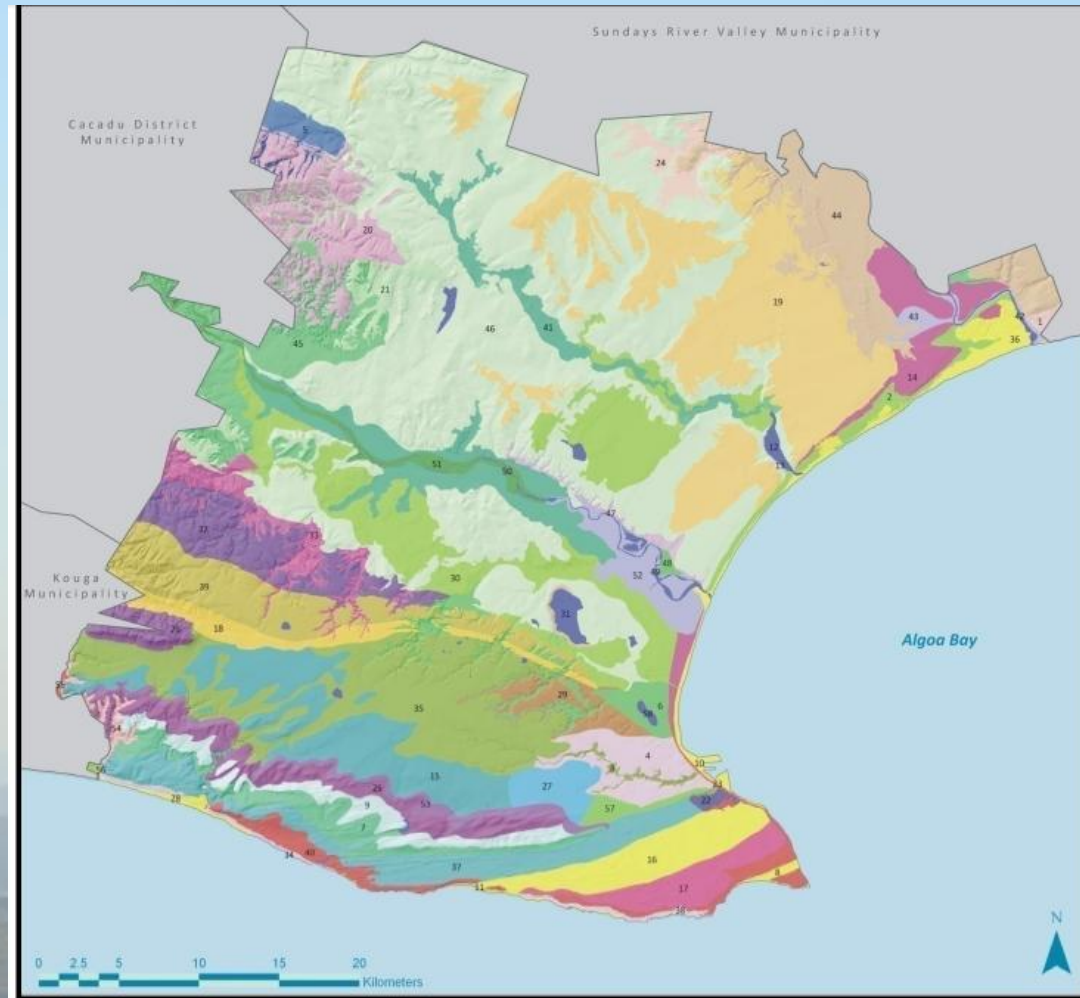
 Fynbos / Thicket Mosaic	 Grassland / Thicket Mosaic	 Forest	 Wetland
 Fynbos	 Subtropical Thicket	 Succulent Karoo / Thicket Mosaic	 Azonal



# Ecological Processes



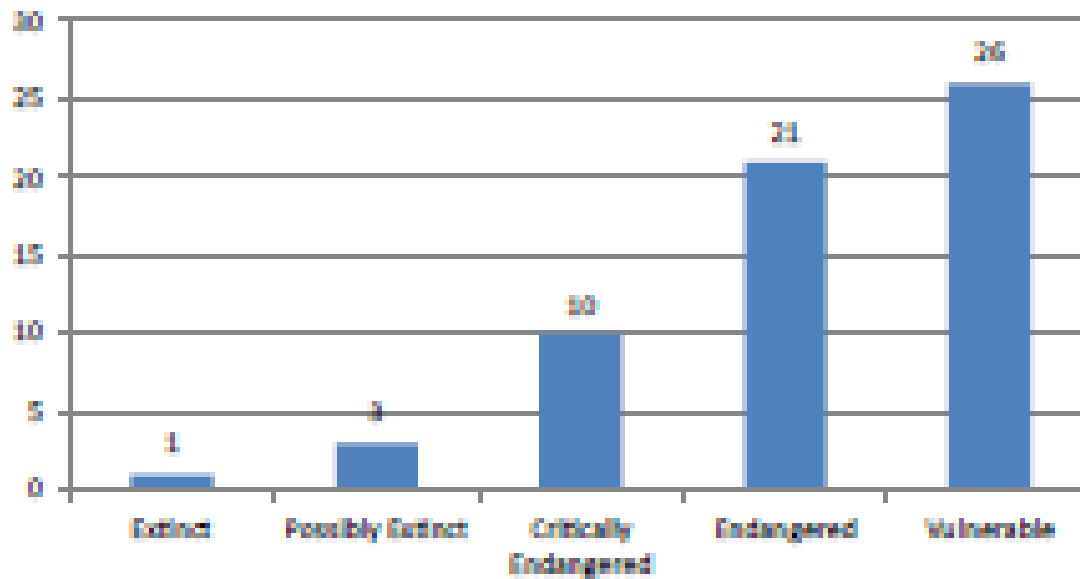
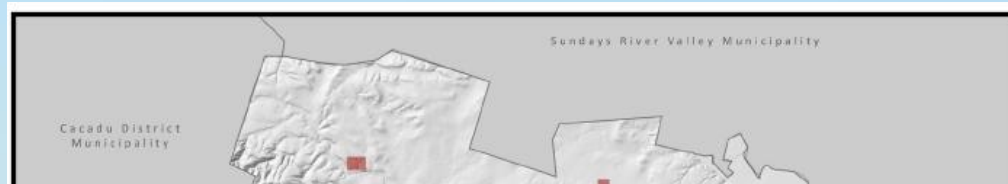
# Vegetation Types



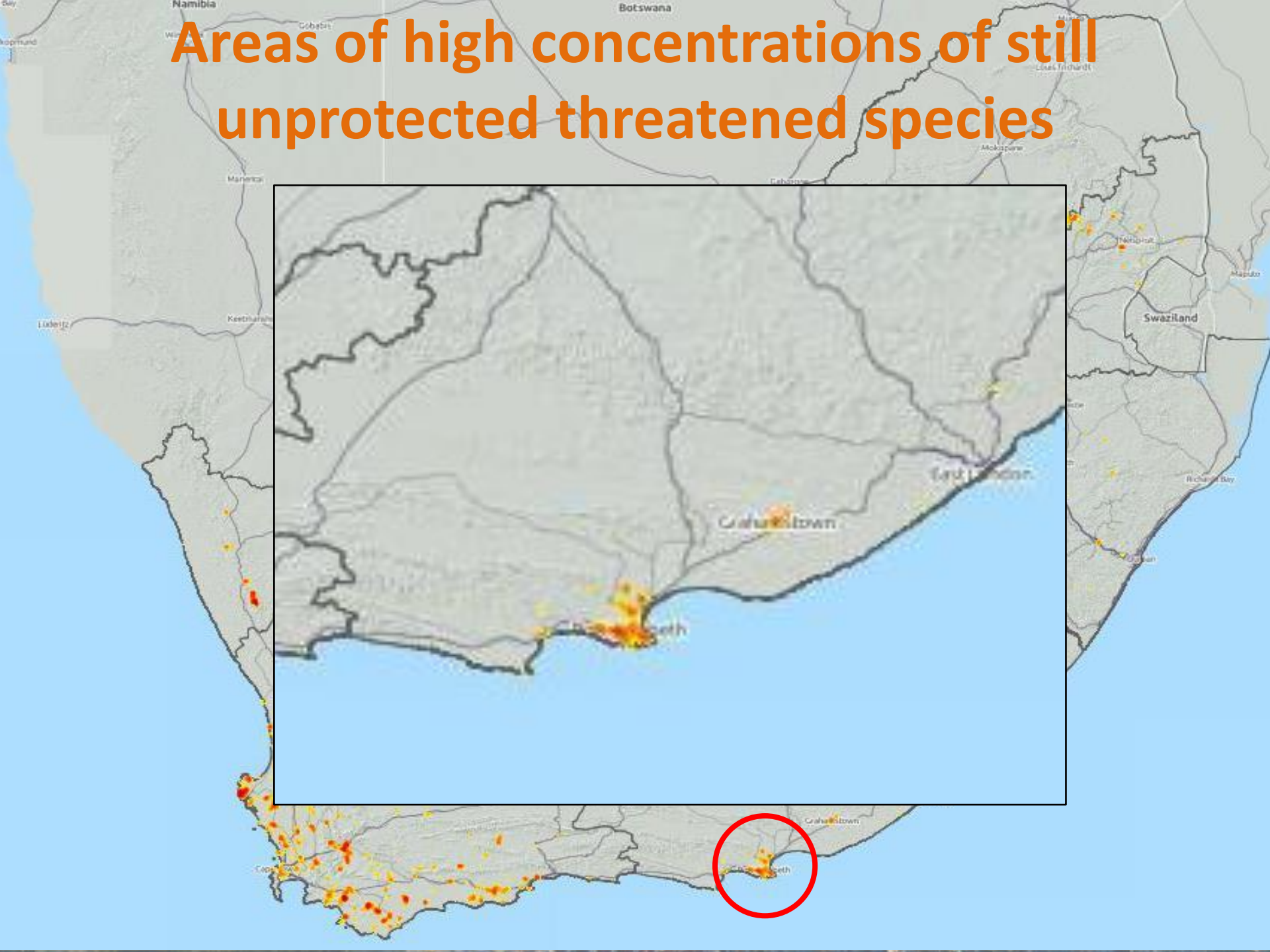
# Biodiversity under pressure



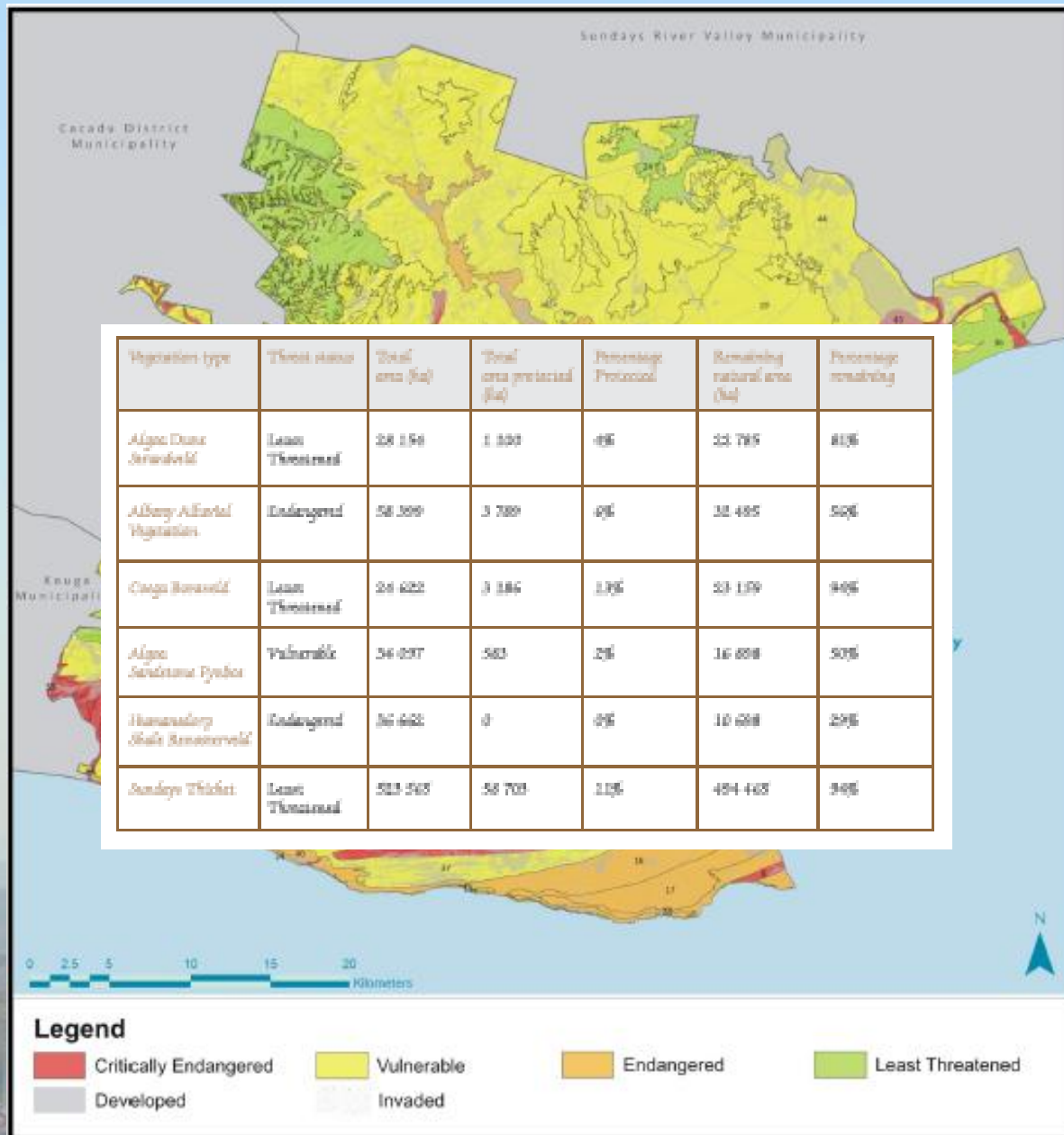
# NMBM: A hotspot under threat



# Areas of high concentrations of still unprotected threatened species







# CREW

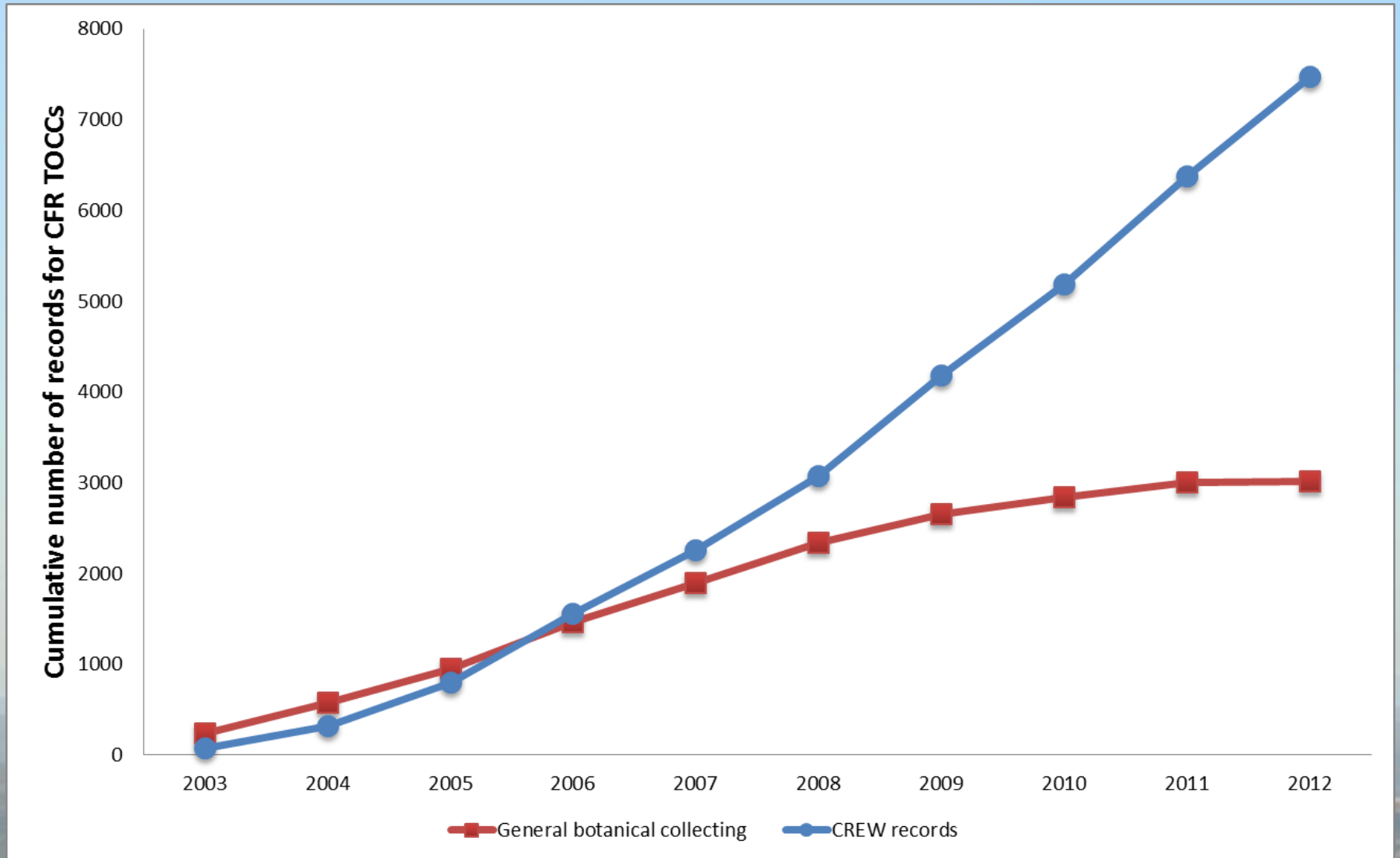
## Custodians of Rare and Endangered Wildflowers



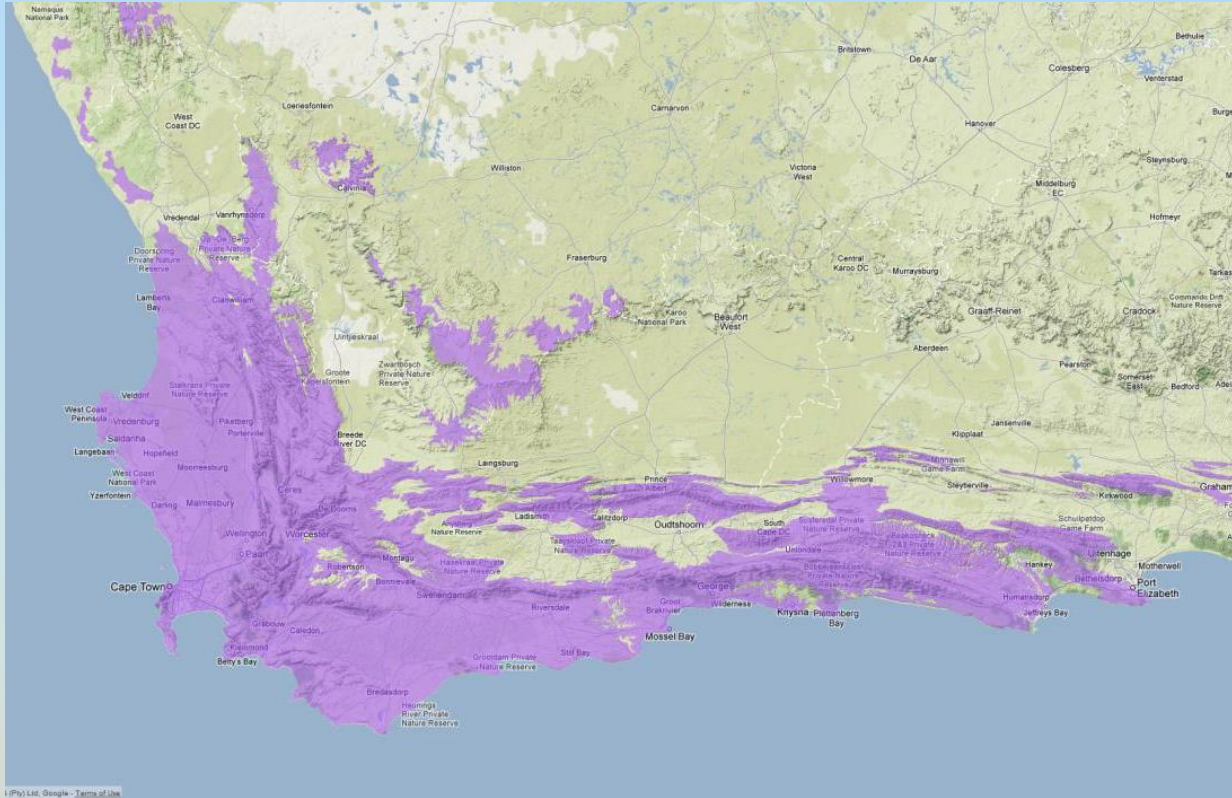
SANBI volunteer programme to find Species of Conservation Concern



# Progress 2003-2013

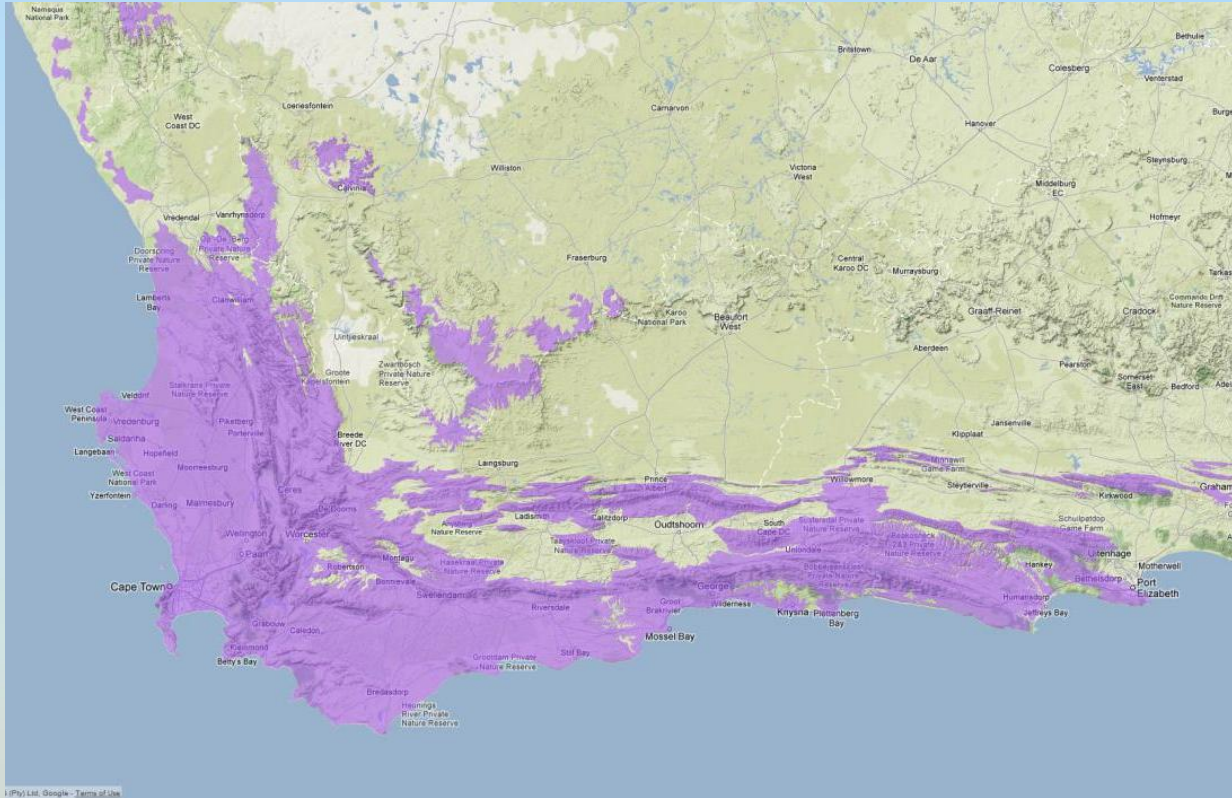


# Progress 2003-2013



**3250** species of conservation concern occur within the Greater CFR (65% of SA total)  
CREW has surveyed **1038** (32%)

# Progress 2003-2013



**1799** threatened species occur within the Greater CFR (68% of SA total)  
CREW has surveyed **727** (40%)

# PE CREW group

Started in 2008



# Summerstrand & Sardinia Bay

*Aspalathus cliffortiifolia* CR PE



*Aspalathus recurvispina* CR

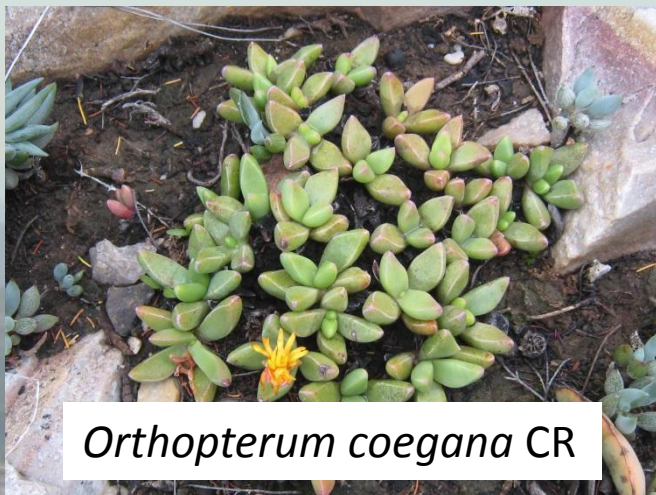


# Other rediscoveries





# Thicket SCCs



# CREW & BOTSOC Adopt-A-Plot

BOTSOC Centenary and  
CREW's 10 Anniversary



# NMBM BSP



## Nelson Mandela Bay Biodiversity Stewardship Programme

- External programme funded by CEPF

### Aims to:

- support sustainable management and conservation of the NMB MOSS in partnership with private landowners
- capacitate civil society, and in particular CREW

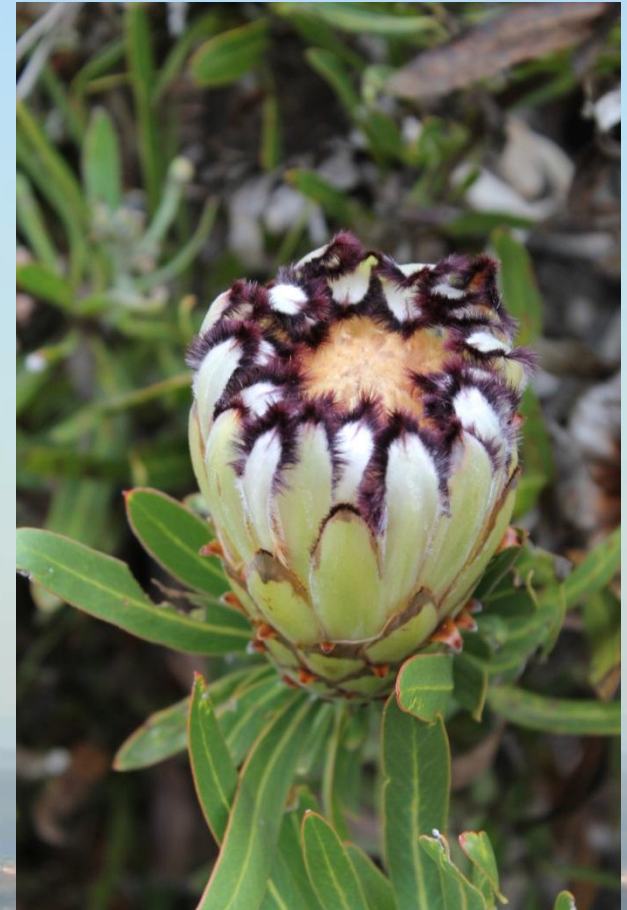




Photo: Ismail Ebrahim



**Thank You**

