

Proposed spekboom reforestation plot at Vleikloof

The area around Vleikloof has suffered from degradation. Currently the carrying capacity of the land is so low that on several fields cattle has been withdrawn. Land owners currently lack resources to restore these fields themselves. The area was not only selected for the easy access, but as well for the vulnerability to erosion and loss of water infiltration capacity of this area.

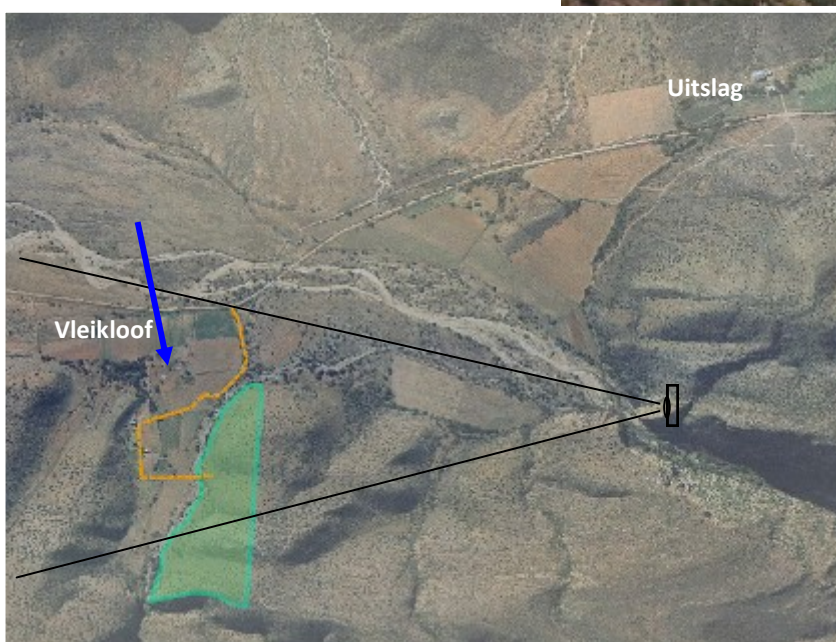


Figure 1: Proposed restoration plot with farm roads

Figure 2: area around Vleikloof, degradation on the hillslopes to the left is visible, and is representative for the area

The reforestation plot follows on its eastern boundary the border of the Vleikloof farm with the Farm Uitslag (Uitslag farmstead is situated top-left in the aerial photograph, figure 1). On the west side it is bordered by Vleikloof tributary. By reforesting these slopes it is hoped that peak runoff is reduced. Furthermore, this intervention should enhance infiltration of water, which should lead to more groundwater storage. The area will be monitored to be able quantify the benefits of this restoration effort (carbon, water, erosion). The project will be done in close collaboration with the landowner.