

## 10. South African Estuaries Information System (SAEIS; Key collaborators, Elwandle and SAIAB)

The SAEIS project is joint effort by SAEON's Elwandle and Egagasini Nodes. Already, a standalone application and database of the SAEIS is ready and available for distribution (Fig. 10.1) and has been requested from a number of different scientists and institutes. However, the Elwandle Node is continuously working to fill the database with all available estuary data, and the database is growing as more datasets are discovered. Phase II of SAEIS is the movement of the standalone application onto a web site with the same database providing the backend. The test site is shown in Fig. 10.2. With both the application and web site, an estuary may be selected off a GIS map (or from a list of estuaries), and then the estuary's details and other management parameters are displayed. A search may be made on the estuary's literature, images, datasets and maps.

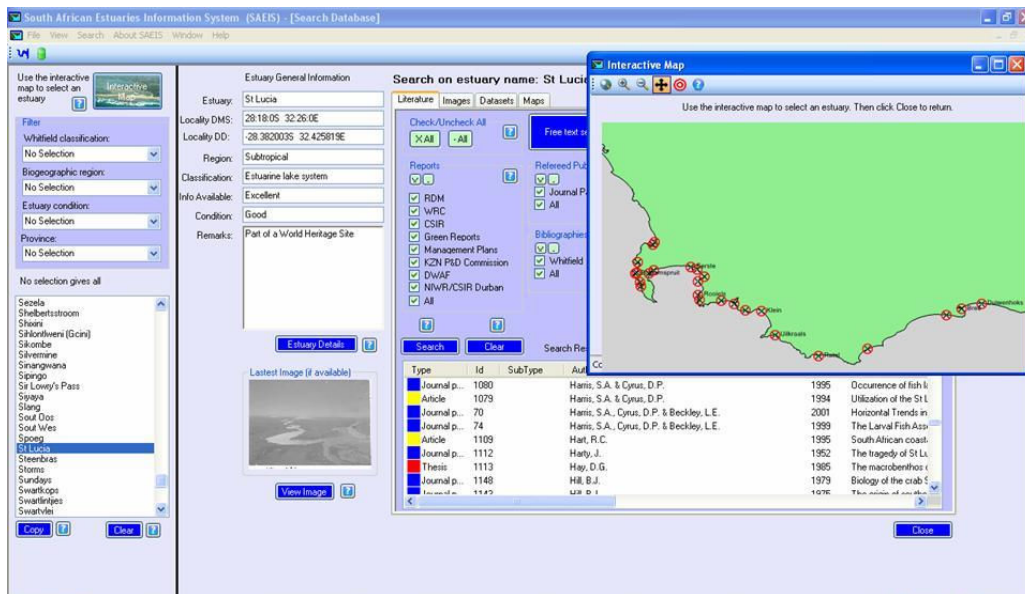


Fig 10.1: The SAEIS stand-alone application.

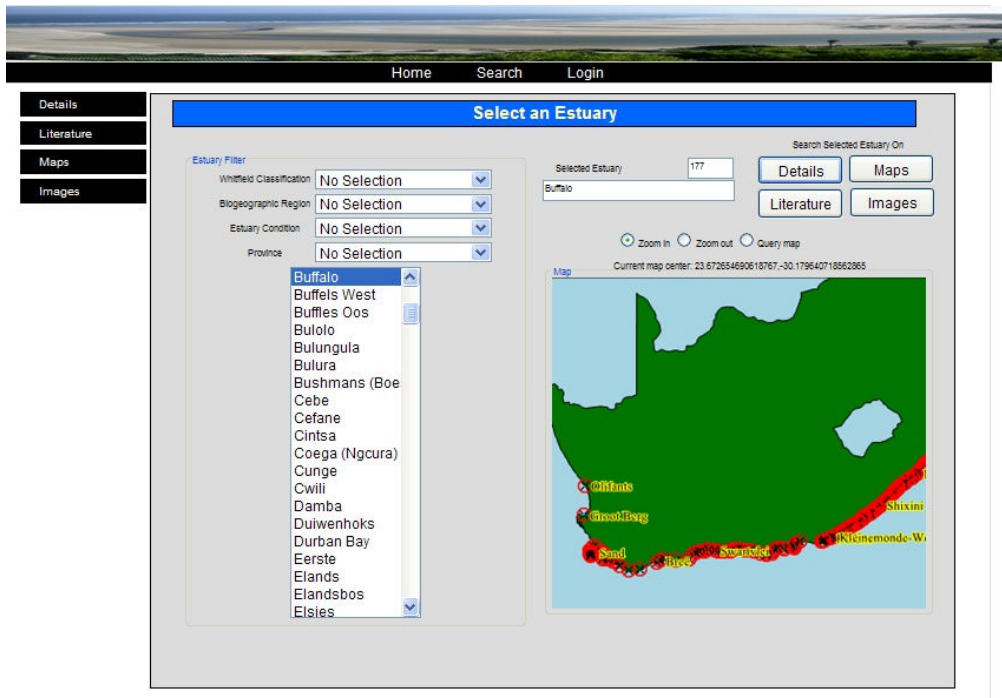


Fig 10.2: The SAEIS test web site.