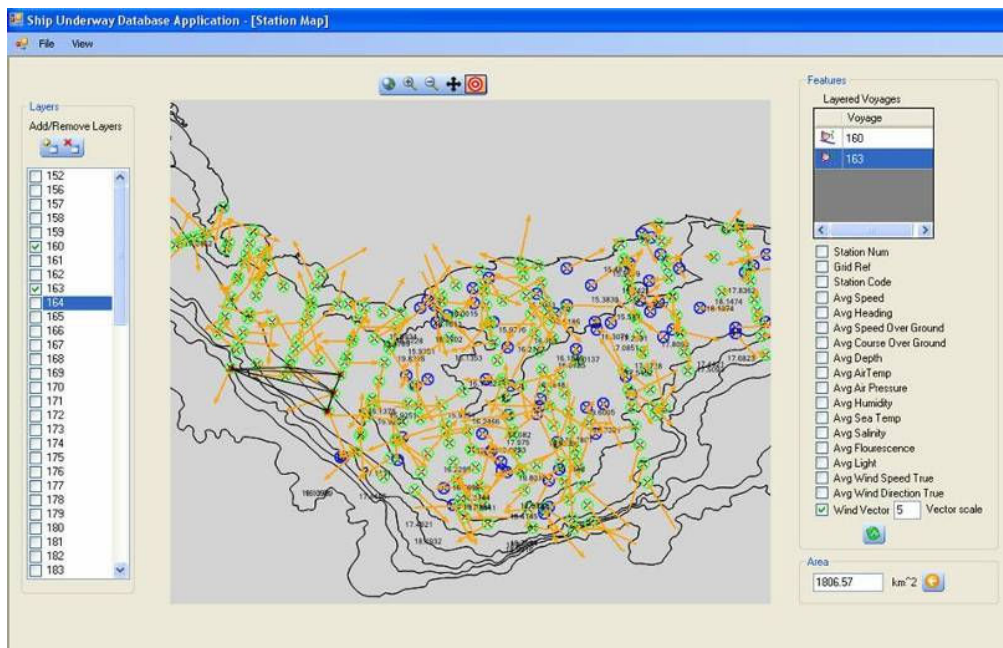


## 11. Ships Underway Database (SUD; Key collaborators, DEA and DAFF)

SUD is a stand-alone application that displays parameters measured by a ship while underway, such as wind and sea surface temperature. Variables from several cruises may be displayed at once, allowing a visual comparison to be made between cruises. In addition, the measurement of surface area allows fisheries scientists to calculate critical variables by the click of the mouse. The system is still in development because additional functionality has been requested, but could be used as it is. Plans are underway to move the application to web site and expand its functionality. The availability of this database also needs to be advertised when it is finalised, for maximum use. A number of people have already suggested that such a database will be useful.



**Fig 11.1: A surface plot from the Ship Underway System showing average winds measured at the stations during two cruises. Surface area over a section has been calculated and is shown in the right bottom corner.**