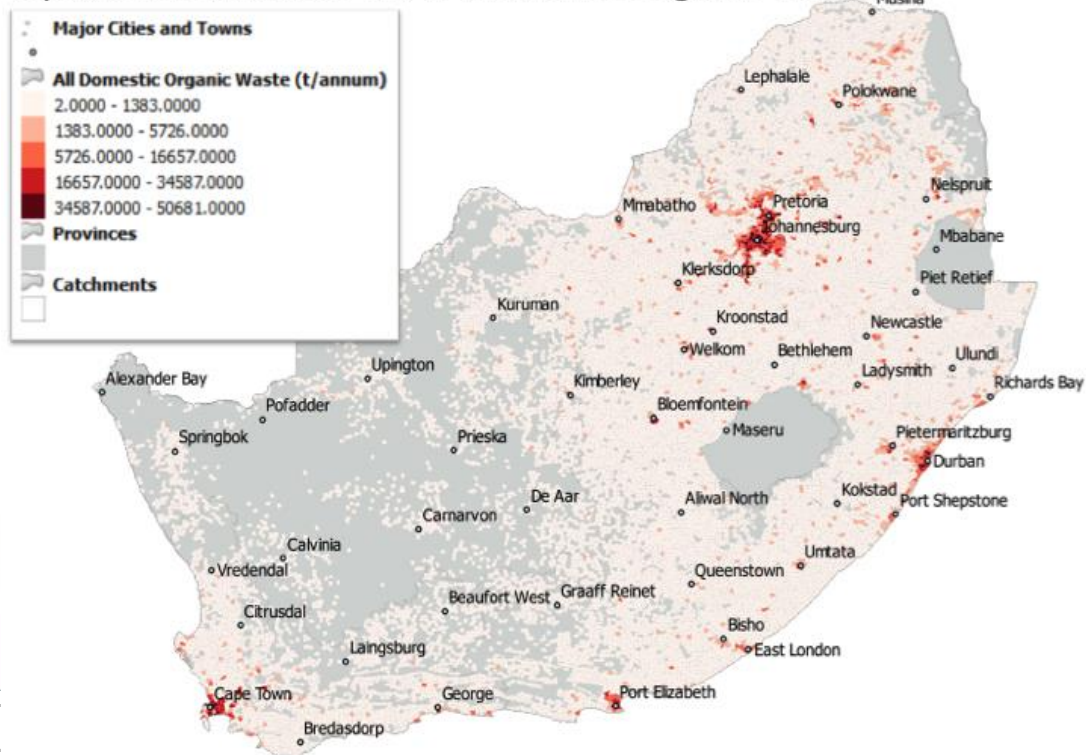


Unserviced Organic Waste - Solid Waste and Waste Water**Spatial Distribution of All Domestic Organic Waste**

CSIR
our future through science

NRF **SAEON**
National Research Foundation South African Environmental Observation Network

Author(s): Hugo, W

Date: 2015

Meta-Data

Title	Unserviced Organic Waste - Solid Waste and Waste Water
File Name	MESO_AOW
Author(s)	Hugo, W
Publication Date	2015
Citation	Hugo, W, 2014. Unserviced Organic Waste - Solid Waste and Waste Water. In: Hugo W. (Ed). 2015. South African BioEnergy Atlas. DST, Pretoria, RSA, Section WP04_04.
License	Creative Commons 4.0 BY SA (No restrictions on re-use, proper citation and attribution requ
Abstract	Data was derived from two other data sets generated by the BioEnergy Atlas: * organic component of solid waste (serviced), from households; * organic component of waste water (serviced), also from households.
Keywords	biomass, potential, waste water, organic waste
Caveats	http://bea.dirisa.org/resources/metadata-sheets/WP04_04_META_MESO_RUR.pdf
Web Meta-Data	

Web Resource	http://app01.saeon.ac.za:8086/geoserver/BEA/wms?service=WMS&version=1.1.0&request=GetMap&layers=BEA:MESO_AOW&styles=&bbox=16.451920000028533,-34.83416989569374,32.892531746697685,-22.125030000001036&width=512&height=395&srs=EPSG:4326&format=application/ope
---------------------	---

Methodology/ Protocol

Processing/ Provenance	<i>As described above</i>
------------------------	---------------------------

Important Attributes

MESO_ID	Meso-zone ID
WASTE_POTE	Total Organic Serviced Waste (t/a)

References and Sources

[1]	<i>Hugo, W, 2014. Serviced Organic Waste - Solid Waste and Waste Water. In: Hugo W. (Ed). 2015. South African BioEnergy Atlas. DST, Pretoria, RSA,</i>
[2]	<i>Hugo, W, 2014. Serviced Waste Water - Solid Waste and Waste Water. In: Hugo W. (Ed). 2015. South African BioEnergy Atlas. DST, Pretoria, RSA,</i>