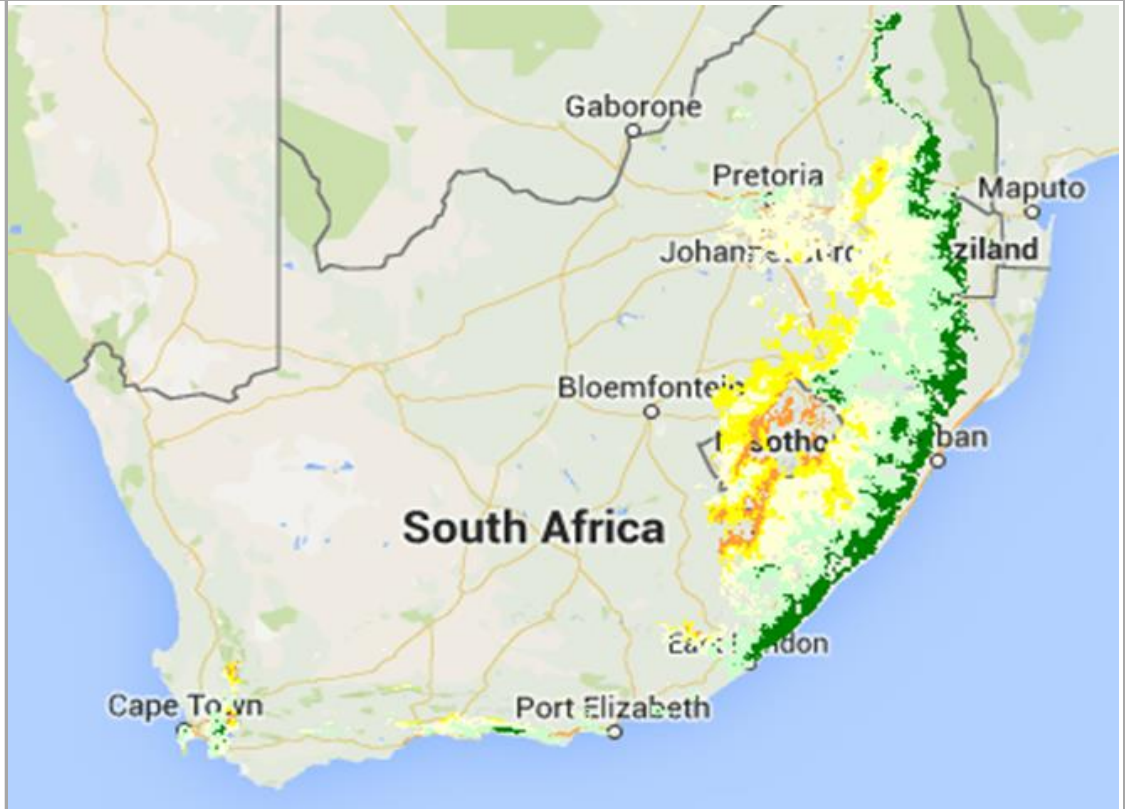
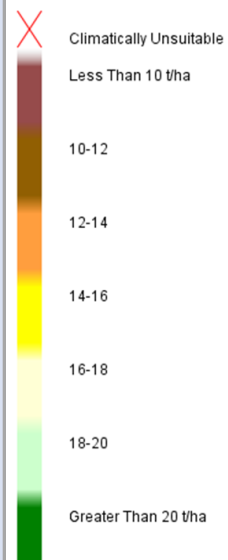


Pinus patula Yield Estimation

Legend

Pinus-patula Yield Estimation



Author(s): Derived from Schulze, R.E and Maharaj, M (2007)

Date: 2007

Meta-Data

Title	Pinus patula Yield Estimation
File Name	mai_ppa
Author(s)	Derived from Schulze, R.E and Maharaj, M (2007)
Publication Date	2007
Citation	Schulze, R.E. and Maharaj, M. 2007. <i>Pinus patula</i> Growth Areas and Yield Estimation. In: Schulze, R.E. (Ed). 2007. South African Atlas of Climatology and Agrohydrology. Water Research Commission, Pretoria, RSA, WRC Report 1489/1/06, Section 18.7.
License	Creative Commons 4.0 BY SA (No restrictions on re-use, proper citation and attribution required)

Abstract	<p>*The dataset shows climatically optimum growth areas and yield estimates of <i>Pinus patula</i>. *Yield estimates were derived from Schulze R.E. and Maharaj M. (2007).</p> <p>*Climatically optimum growth areas of <i>P. patula</i> occur in an arc inland of the coast from the northeast areas of the Eastern Cape, through KwaZulu-Natal and including a strip along this province's border with Lesotho and the Free State, the western third of Swaziland and into Mpumalanga. The major constraint on the inland side of this arc is a lack of rainfall, while on the coastal side of the arc temperatures are too high.</p> <p>*Mean Annual Increments of <i>P. patula</i>, at > 20 t/ha/annum, are highest in an arc coastwards of the climatically optimum areas, where the trees tend to be vulnerable to heat related diseases. Away from the coast MAIs drop off into the 16 – 20 t/ha/annum range.</p>
Keywords	agriculture, biomass, growth areas, pinus patula, yield estimation
Caveats	http://bea.dirisa.org/resources/metadata-sheets/WP03_00_META_MAI_PPA.pdf
Web Meta-Data	
Web Resource	http://app01.saeon.ac.za:8085/geoserver/GAP/wms?service=WMS&version=1.1.0&request=GetMap&layers=GAP:Join_meso_base_and_mai_ppa_int_pt&styles=&bbox=16.4519200000285,-34.8341698956937,32.8925317466977,-22.1250300000011&width=512&height=395&srs=EPSG:4326&format=application/openlayers

Methodology/ Protocol

Processing/ Provenance	As described above
------------------------	--------------------

Important Attributes

MAI_PPA	<i>Pinus patula</i> yield estimates, t/ha
---------	---

References and Sources

[1]	<p><i>Pinus patula</i> Growth Areas: http://app01.saeon.ac.za:8082/geoserver/BEEH_grid/wms?service=WMS&version=1.1.0&request=GetMap&layers=BEEH_grid:pin_pat&styles=&bbox=16.458333,-34.841667,32.908333,-22.141667&width=512&height=395&srs=EPSG:4326&format=application/openlayers</p>
[2]	<p>Schulze, R.E. and Maharaj, M. 2007. <i>Pinus patula</i> Growth Areas and Yield Estimation. In: Schulze, R.E. (Ed). 2007. South African Atlas of Climatology and Agrohydrology. Water Research Commission, Pretoria, RSA, WRC Report 1489/1/06, Section 18.7.</p>